

WE DON'T MAKE DREAMS WAIT

Annual Report 2024



CONTENTS

EDITORIAL	7
 PORTAVENTURA WORLD	 10
Sustainable management	11
 PORTAVENTURA FOUNDATION	 13
The Foundation and the SDGs	14
Financing	16
 PortAventura Dreams Village	 19
Dreams Hospitals	20
The facilities	20
Expansion	21
Dreams Week	23
A Dream Week	24
The impact of leisure on patient recovery	26
Fundraising	28
 Collaborative actions	 31
Inclusion and solidarity through sport	31
Events with pediatric hospitals	34
Access to leisure	38
"Fent Amics" Down Catalunya	38
The Solidarity Dinner	40
 Corporate social action	 45
Teaming	45
Corporate volunteering	47
Our Story	48

PORTAVENTURA PRIVATE FOUNDATION
Avda. Mayor Pere Molas, Km 2
E-43480 Vila-seca (Tarragona)
Tel: + 34 977 77 91 52
<https://fundacionportaventura.org>
fundacion@portaventura.es

 fundacionportaventura
 Fundacion PortAventura

Design, writing and layout: The Social Vim Collective





BOARD OF TRUSTEES:

President

Mr. Ramon Marsal Minguella

Vice President

Mr. Arturo Mas-Sardá

Members

Mr. Fernando Aldecoa Llauradó

Mr. Carlos Kinder Espinosa

Ms. Mercè Tura Lladó

Secretary

Ms. Choni Fernández Veciana

Executive Team:

Foundation Operations Manager

Mrs. Elena Güemes Santos

Foundation Technicians

Mrs. Sheila Tarifa Cano

Mrs. Luisa Velásquez

Mr. Andrew McGrath

Administrative

Ms. Ana Megía



Ramon Marsal Minguella

President of the PortAventura Foundation

As president of the PortAventura Foundation, it is an honor to address you once again through this report, which proudly reflects our actions and achievements in 2024. Every year, as we reflect on our work, I feel an immense joy and satisfaction to see how, thanks to the unconditional support of volunteers, organizations, companies and individuals, we continue to promote outstanding social action that leaves a positive mark on our community.

Our work would not be possible without the generous contribution of PortAventura World, which annually allocates 0.7% of its profits to the Foundation, or without donations from institutions, companies and individuals that bring our projects to life. Thanks to this joint commitment, 2024 was a year of growth and significant progress, marked by outstanding milestones like the expansion of Dreams Village, with the addition of four new houses, and the celebration of the fifth anniversary of this emblematic project.

Dreams Village continues to be the heart of our Foundation. Throughout the season, more than 300 families stayed in our villas, designed to offer all the necessary facilities and provide them with an unforgettable experience. This unique project combines the playful with the social, focusing on the power of leisure as part of the recovery process for children and young people. Through this program we welcome families in vulnerable situations, with children facing serious illnesses, special needs or risk of social exclusion, offering them unforgettable days at the resort.

In addition, we continue to work to improve access to leisure as an essential right for all. In 2024, more than 13,000 children and young people at risk of social exclusion enjoyed free tickets to our parks thanks to collaborations with social organizations throughout the country.

The Foundation's annual events also stood out this year. The XII edition of the Fun Run, the XIII Solidarity Dinner, the 9th Golf Tournament and the beloved Christmas activities, like visits to the Joan XXIII and Sant Joan de Reus hospitals or the switching on of lights at the Sant Joan de Déu Hospital, were clear examples of how solidarity and commitment can transform lives. Thanks to these actions and collaborations with other entities, we managed to raise €1,365,838 and allocated €1,116,447 to aid and projects for our beneficiary groups.

I want to express my deep gratitude to the PortAventura World team, who are always ready to support the initiatives of the Foundation, and, above all, our volunteers. Your dedication and commitment are the driving force behind our mission. Thanks to you, every family that participates in the Dreams Village program feels supported and welcomed, making every day a memorable experience.

Our commitment to society and improving the quality of life of the most vulnerable people is unwavering. Every project, event or action reflects our firm commitment to generating a positive impact in our community, contributing, even minimally, to improving the lives of those who need it most.

Finally, I would like to thank all those who, with their generosity and continuous support, join us in our mission year after year. Thanks to you, we continue to dream of a more hopeful future for everyone.



PORTAVENTURA WORLD

For 12 years, at the PortAventura Foundation we have been channeling and promoting the social action of PortAventura World, a company distinguished by its commitment to society, integrating responsible and sustainable management.



SUSTAINABLE MANAGEMENT

The company's corporate responsibility strategy for the years 2022-2025 was born out of PortAventura World's commitment to the planet around us as well as a commitment to responsible action in environmental, social and governance aspects. Sustainability is integral to PortAventura World's business plan, it is a core part of its identity and corporate vision.

Environmental challenges

- Energy transition and climate change.
- Circular economy and resource efficiency.

Societal challenges

- Collaboration with disadvantaged groups through our Foundation. We aim to increase the number of families hosted in PortAventura Dreams Village.
- Security of facilities and visitors.
- Health and safety of employees.
- Overall visitor satisfaction with their experience.
- Commitment to local development.

Challenges of good governance

- Sustainability in governance and decision-making processes.
- Sustainability in the supply chain.
- Security of facilities and visitors.
- Ethics and good business practices.
- Ensuring equal opportunities and boosting staff motivation.

Partnerships

To meet these challenges, we have joined forces with:

UNITED NATIONS GLOBAL COMPACT

In 2008, PortAventura World joined the United Nations Global Compact. This international initiative promotes the implementation of 10 universally accepted principles in the areas of human rights, ethical and inclusive labour standards, the environment and the fight against corruption in companies' activities and business strategies.



B CORP COMPANY

PortAventura World is part of B Corp, serving as a model of a sustainable and regenerative company. B Corps meet high standards of social and environmental performance, public transparency, and legal accountability. They are legally required to take their employees, customers, suppliers, community, and the environment into account in decision-making.



WE DON'T MAKE DREAMS WAIT

PORTAVENTURA FOUNDATION

At PortAventura World, our purpose goes beyond leisure: we want to make the dreams of children and young people in vulnerable situations come true. With a steadfast commitment to making a positive impact on society, we established the PortAventura Foundation in 2011. This initiative channels our charitable efforts and strengthens our dedication to children and youth.

Since its inception, PortAventura has been synonymous with joy and excitement. Through the PortAventura Foundation, we turn these values into initiatives that enhance the well-being of children, offering them improved quality of life and new opportunities. Projects like PortAventura Dreams allow children with serious illnesses and their families to enjoy unforgettable experiences, promoting their emotional well-being and strengthening family ties in a unique and welcoming environment.

Our commitment is clear: to continue creating moments that make a difference and bring real value to society.



THE FOUNDATION AND THE SDGS

Improving health and wellbeing



Supports projects to improve the health and well-being of children and vulnerable groups, such as collaborating with children's hospitals and organizing solidarity events.

Reducing inequalities



Works on the social inclusion of people in vulnerable situations, promoting accessibility and support for groups with special needs.

Quality education



Promotes educational programs, workshops and activities aimed at children and young people to promote learning and social inclusion.

Partnerships to achieve the goals



Collaboration with various NGOs, companies and public bodies to develop social and environmental impact programs.

FINANCING

PortAventura World allocates 0.7% of its profits annually to fund our Foundation, a basic contribution to carry out our activity. The donations we receive and the agreements with other organizations make it easier for us to raise the necessary resources for our actions.

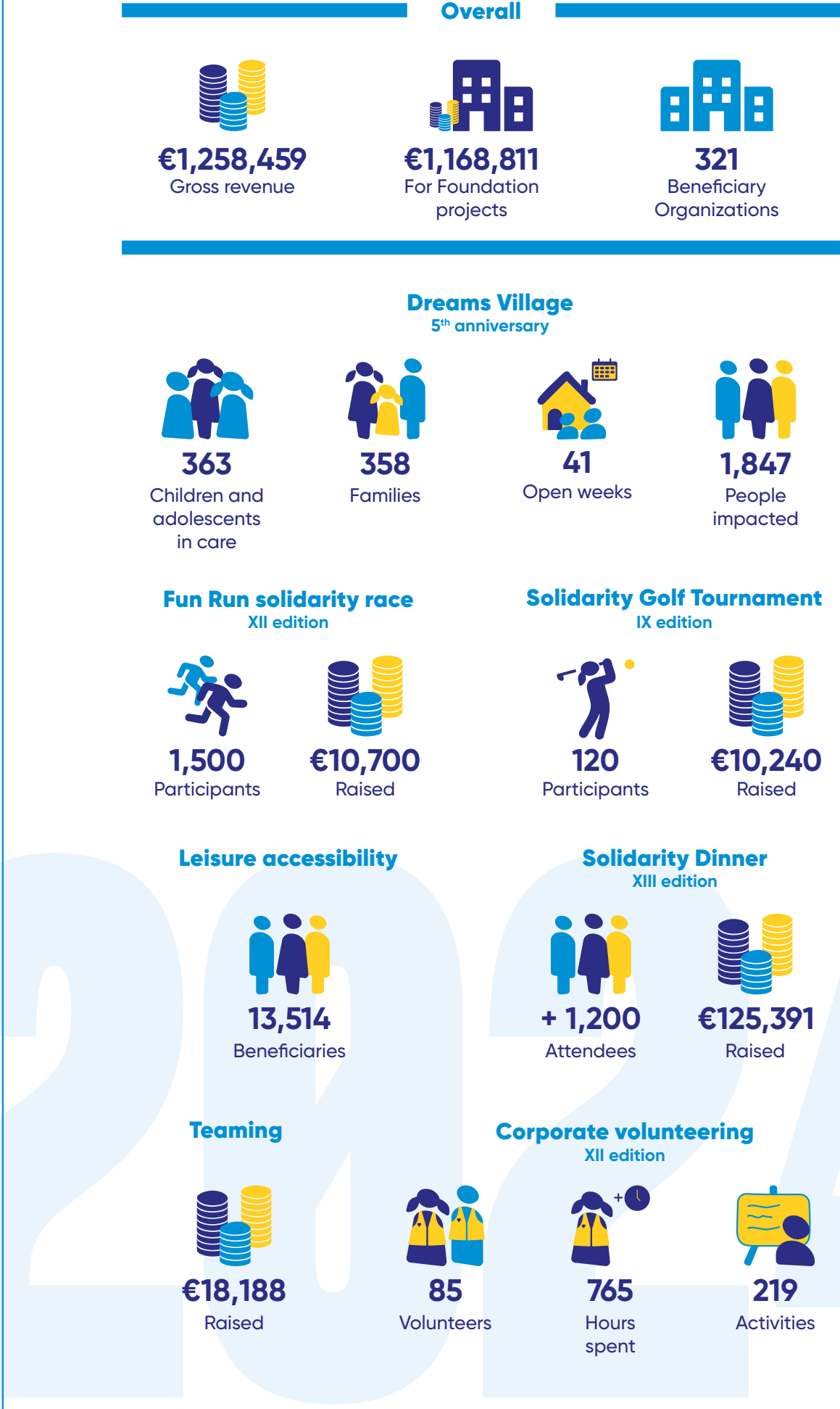
PortAventura Foundation Revenue	Thousand euros
PortAventura World's contribution to our Foundation	€457
Raised through fundraising events	€186
Donations from other foundations and partner companies	€723
Activity expenses	- €280
Total net income	€1,086

Grants awarded and distribution by beneficiary group and events	Thousand euros
Diseases	€948
Special abilities	€120
Social exclusion	€48
Total aid	€1,116

We raised funds for projects thanks to the contribution of 0.7% of the net profit of PortAventura World and the help of thousands of donors.

103% of income allocated to projects.

Highlighted figures 2024



ACTIONS THAT BUILD DREAMS

PORTAVENTURA DREAMS VILLAGE

PortAventura Dreams Village is a social project, a pioneer in Europe, which offers a six-day stay for children between 4 and 17 years old who suffer or have suffered from serious diseases and/or autism spectrum disorder (ASD) who are at risk of social exclusion for economic reasons.

Dreams Village annually welcomes more than 200 families from all over Spain with the sole objective of helping them forget about the condition, offering a physical and playful space, but also an emotional one, to have a psychologically positive effect during the fight against an illness, while also creating new moments of family bonding.

The project puts the patient and their family at the center of the activity with tools to offer comprehensive care to those who have gone through a stressful and delicate stage in life.

The cohesion and mutual support of the family unit is essential during the treatment of the child. The presence of a close-knit and emotionally stable family can have a positive influence on the recovery and well-being of the little ones.

Our most emblematic project benefits children who suffer or have suffered serious diseases included in the list drawn up by the Ministry of Health (according to Royal Decree 1148/2011) and/or autism spectrum disorder (ASD). The choice of families is made through a committee made up of doctors, social workers and other experts in the field of health, which is supported by the three leading pediatric hospitals in Spain, the Red Cross and other private companies and foundations.

List of donors who have invested in Dreams Village since its inception to make the project a reality today:

- ▶ El Corte Ingles
- ▶ Fundación Barça
- ▶ Fundación Cruyff
- ▶ Fundación «la Caixa»
- ▶ Fundación LaLiga
- ▶ Fundación Probitas
- ▶ LG
- ▶ Mango
- ▶ Mediapro
- ▶ KKR
- ▶ Invest for Children
- ▶ Other anonymous donors



363

Children and adolescents in care



358

Families



41

Open weeks



1,847

People impacted

DREAMS HOSPITALS

Sant Joan de Déu Hospital

This is a highly specialized center for the treatment of children and pregnant women. The center offers a comprehensive, multidisciplinary approach to health care. Patients and their families have a central role in the hospital's culture and strategy and play a key role as a lever for transformation and organizational change.

Niño Jesús Children's University Hospital

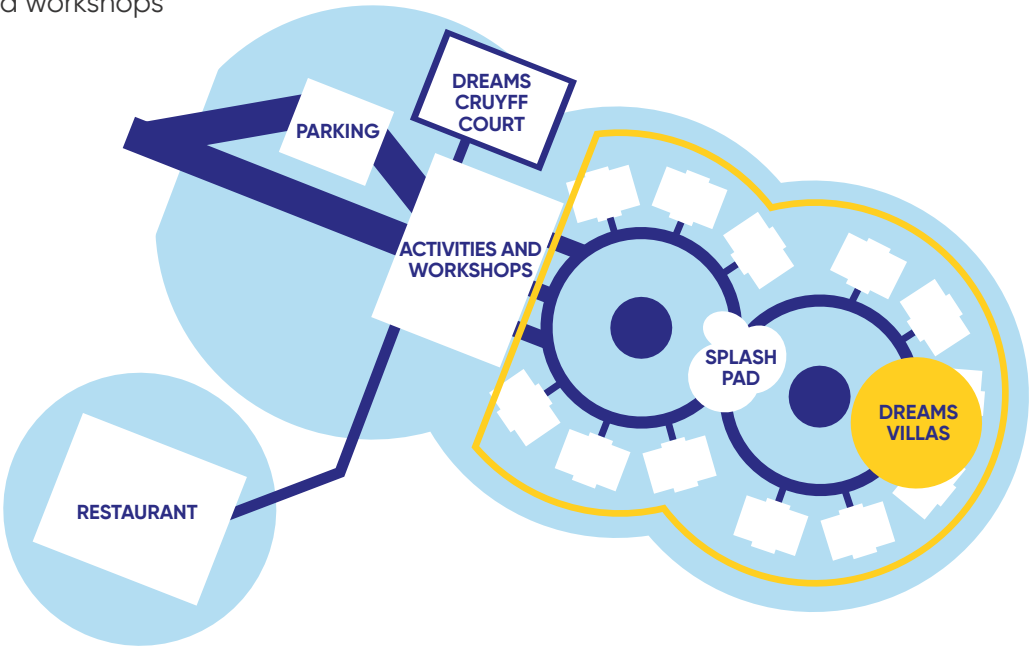
The birthplace of pediatric specialization in Spain. The scientific and research work, backed by the prestige of the professionals who carry out clinical practice at the center, has been reinforced in recent years thanks to the launch of the Niño Jesús University Children's Hospital Biomedical Research Foundation.

Vall d'Hebron Hospital

This is the largest hospital complex in Catalonia, where highly specialized, humane, safe, comprehensive, collaborative and sustainable care is offered, with a team of committed professionals, the most advanced technology, learning and continuous improvement.

THE FACILITIES

- ▶ 8,850m² in total
- ▶ 10 homes of 135m² without architectural barriers
- ▶ 1 restaurant
- ▶ 1 Dreams Cruyff Court
- ▶ 1 room for activities and workshops



EXPANSION

More room for hope

The success of PortAventura Dreams Village has been incredible, but demand continues to grow. More and more families with children with serious illnesses are waiting for their chance to have this unique experience, so we have started an exciting expansion project.

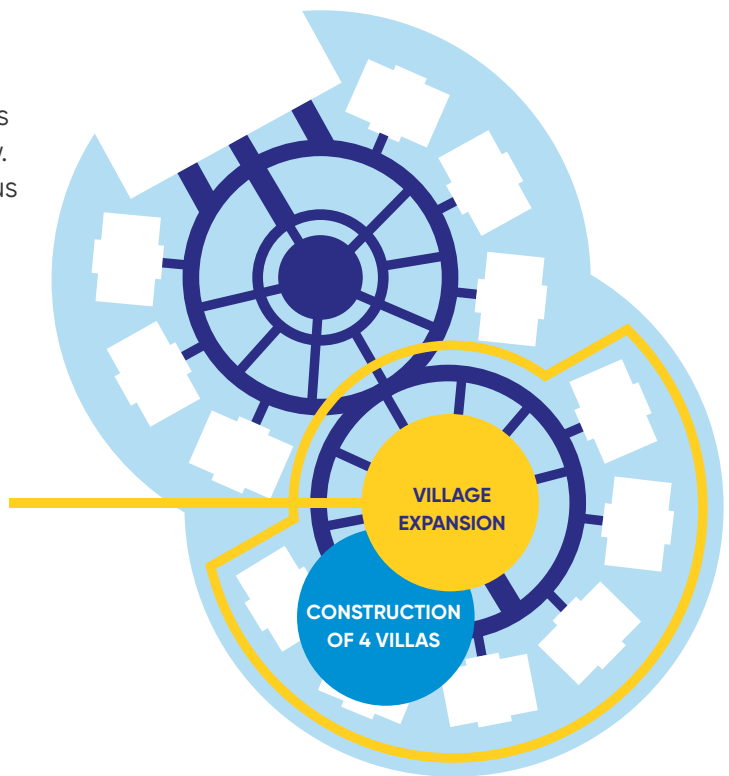
ACHIEVEMENTS

- ▶ Construction of 4 new villas
- ▶ Creation of a *splash pad* water area
- ▶ Creation of more green areas and gardens

Thanks to donations, Dreams Village has 10 villas, with the capacity for 6 people in each.

EXPANSION DONORS

- ▶ Transgourmet
- ▶ Fundación «la Caixa»



"For once my daughter's illness has given us something good to share as a family."

VALERIA'S MOTHER
Dreams Week Participant

DREAMS WEEK

Hospital medical committees select and follow up with families who spend a week in Dreams Village along with other families with children who have the same condition. By bringing together families in similar situations it allows them to interact and share their experience with each other. This fosters mutual understanding and recognition, reduces feelings of loneliness in the face of illness, and fosters resilience.

For a week, children with serious pathologies and their families enjoy a welcoming environment, away from the hospital setting. In this playful context, families of children with the same condition are usually grouped together to facilitate their interaction and so they can share the experience of their illness with each other.

Companies and entities that have made this initiative possible:

- ▶ Banco Sabadell
- ▶ Familia Torres
- ▶ Chiesi
- ▶ Transgourmet
- ▶ Fundación Aladina
- ▶ Mango
- ▶ Fundación Barça



Round-trip taxi transfers from Camp de Tarragona station to PortAventura Dreams.



Five nights in a villa in PortAventura Dreams Village in a cozy setting.



Full board: breakfast and dinner at the Dreams Village restaurant and Dine Around lunch at different resort restaurants.



Six days of unlimited access to all attractions at PortAventura Park, Ferrari Land and Caribe Aquatic Park.

Character visits and other activities at PortAventura Dreams Village.



Premium seats reserved for the main shows.



Explore the project



A DREAM WEEK

Welcome workshop



Group tour



Face Paint



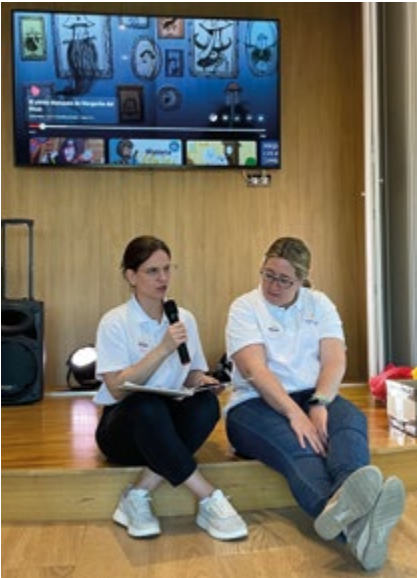
Crafts



Relax & yoga



Storytelling



Fair Play



Group Close



THE IMPACT OF LEISURE ON PATIENT RECOVERY

The Vall d'Hebron Hospital, in collaboration with the Niño Jesús and Sant Joan de Déu hospitals, is carrying out a pioneering psychological study to analyze how a playful-therapeutic experience, outside the hospital environment, influences the emotional well-being of children with serious illnesses and their families in the final stage of treatment.

Several studies have pointed to the importance of leisure and recreation in patients' recovery, but until now no clinical study had been developed with experimental controls that rigorously measured this impact. This project seeks to scientifically demonstrate that offering children and their families an environment of leisure and joy can be a key complementary tool in their recovery process.

Families who have participated in PortAventura Dreams Village highlight significant improvements in the emotional state of their children: they return more excited, with greater peace of mind and a more positive attitude to face daily challenges. Patients themselves confirm these benefits, expressing that this experience helps them regain strength and feel less distressed. The importance of these testimonials is enormous, as they reflect the need to incorporate emotional well-being strategies into traditional medical treatments.

The dreams Project symbolizes a respite for children with serious illnesses and their families, offering them an oasis of tranquility, joy and emotional connection. Through carefully designed experiences, this project seeks to provide moments of happiness in the midst of a challenging life situation.

In addition to individual impact, this initiative strengthens family bonds and fosters empathy and resilience. By sharing moments with other families going through similar situations, a sense of community and mutual support is created that reduces the feeling of loneliness. Parents find in other parents a reflection of their own experiences, and children are accompanied on their journey, feeling understood and supported.

For years, at Vall d'Hebron hospital we have observed how these experiences transform the attitude and mood of patients. That's why we decided to go a step further with the Dreams Studio, a clinical trial designed with scientific rigor to objectively measure these effects. With the collaboration of the Sant Joan de Déu and Niño Jesús hospitals, the study will have a wider and more diverse sample, which will allow us to obtain results with greater validity and clinical significance.

From a qualitative point of view, we know that this experience is deeply meaningful for patients and their families. We now seek to support these observations with scientific data that can influence future treatment strategies, integrating emotional well-being as a fundamental pillar in medical recovery.

We are proud to see how PortAventura Dreams Village continues to grow, allowing more families to access this necessary relief in their courageous fight against the disease. We strongly believe in the importance of these types of projects and hope that their positive impact will continue to expand, benefiting more and more children and families in the future.

"This project has brought immense joy, as this type of initiative does not always reach groups of patients with chronic illnesses."

DR. RUBÉN BERRUECO MORENO

Head of the Haematology Department at the Hospital Sant Joan de Déu Barcelona



FUNDRAISING

Solidarity alliances that leave their mark

In 2024, several companies reinforced their commitment to the Dreams Village project by directly financing full weeks of visits for families, reaching an overall contribution of €228,000. This generous contribution allowed more families with children suffering from serious illnesses to enjoy an experience of rest, fun and emotional support at the heart of PortAventura World.

Some companies not only made significant financial contributions but also took advantage of the benefits of corporate volunteering, promoting the active participation of their teams in the Foundation's activities. Here are some examples:

- Mango
- Invest
- Banco Sabadell
- Transgourmet
- Obra Social "la Caixa"
- Among others

This involvement has strengthened the pride of belonging, fostered values of solidarity and had a positive impact on their internal reputation.

This combination of sponsorship and volunteering has proven to be a powerful and transformative formula, linking social action with the human and reputational development of companies. At Dreams Village, each sponsored week represents much more than a visit: it is a tangible commitment to hope, emotional health and building a more supportive future.



It gives a lift to those who need it most

At PortAventura Foundation we believe in the power of solidarity to transform lives. Through Dreams Village, we provide unique experiences to children with serious illnesses and/or autism spectrum disorder and their families, offering them a stay full of magic, disconnection and unforgettable moments.

Now you too can be part of this great initiative. Cover the full cost of one or more families' stay at Dreams Village and join us for workshops, activities and the exciting Dreams Week. Help us make our challenge possible: **340 Dreams families served every year.**



GIVE THE
GIFT OF A
DREAMS
WEEK!



HELPING TO MAKE DREAMS COME TRUE

COLLABORATIVE ACTIONS

INCLUSION AND SOLIDARITY THROUGH SPORTS

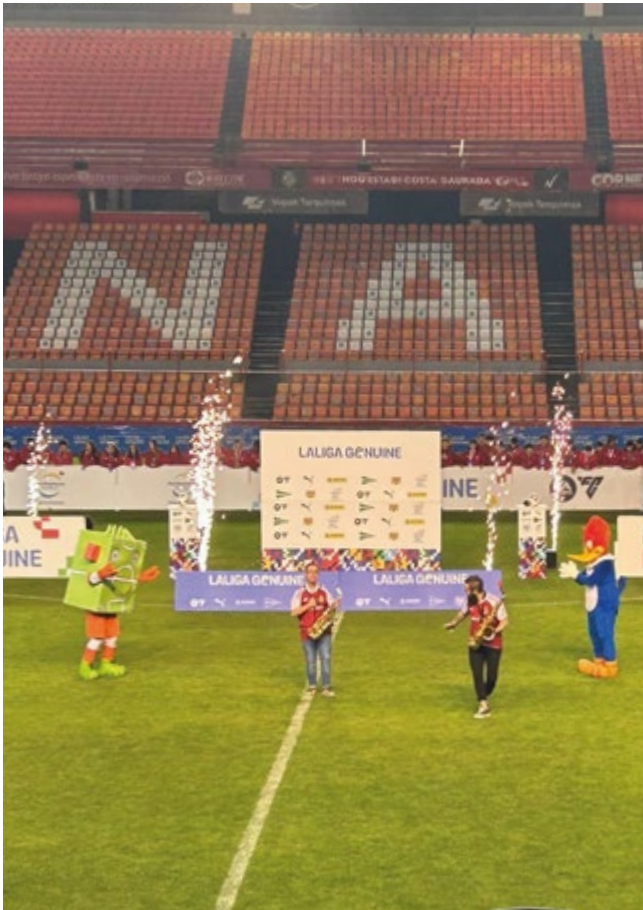
The PortAventura Foundation, committed to the social integration and well-being of vulnerable groups, uses sport as a key tool to promote inclusion and support those who need it most. Through various initiatives, the foundation has managed to unite thousands of people with the common goal of creating a more just, supportive and accessible environment for all. Below, we highlight three fundamental actions it has carried out:



LALIGA GENUINE and PortAventura World

PROMOTING INCLUSION THROUGH FOOTBALL

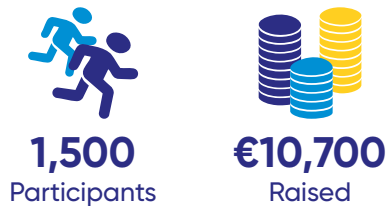
The alliance between LALIGA GENUINE and PortAventura World continues to grow with the aim of integrating people with intellectual disabilities into the world of sport. This year 47 teams participated in an inclusive football tournament that, in addition to promoting the sport, allows players to enjoy a weekend at the resort. In parallel, the second educational event titled "Leisure and Sports as Tools for Inclusion for Groups with Functional Diversity" was held, bringing together experts and organizations committed to diversity. This event highlights the importance of offering accessible leisure spaces, where sport serves as a catalyst for integration and respect for diversity.



The Fun Run

A SOLIDARITY RACE FOR INCLUSION

At the end of May, more than 1,500 runners joined the 11th Fun Run, a charity race organized by the PortAventura Foundation. With circuits of 5 and 10 km, participants toured the park, enjoying not only the sport, but also the opportunity to get to know the Dreams Village, a space dedicated to inclusion. The funds raised, a total of €10,700, went to the Sant'Egidio Community and Aspercamp, two associations that work to support people in vulnerable situations. In addition to the adult races, a space was organized for the little ones, who participated in recreational activities like children's races and Zumba classes.



Solidarity Golf Tournament

RAISING FUNDS FOR LOCAL PROJECTS

Sport not only promotes health and wellbeing, it's also a means to support local communities through fundraising. A good example of this was the 9th Solidarity Golf Tournament, organized by the PortAventura Foundation last November at Infinitem Golf. 120 players participated in this solidarity day, raising €10,240 for local charities. The funds were given to CEEPSIR Escola Solc and Fundación Bara, two entities that work to support young people with disabilities and in situations of social risk. The event included activities like a golf initiation for vulnerable groups, providing an inclusive experience for those who need it most, including the beneficiaries of these organizations.

CEEPSIR ESCOLA SOLC

- Hosts programs like "Help-me, Ayúdame" and "Pequeñas miradas, grandes aprendizajes", aimed at students with autism spectrum disorder (ASD).
- It provides specialized education to students from Tarragona with special educational needs, promoting autonomy, respect for human rights and democratic participation.

BARA FOUNDATION

- It runs the 12/18 program, a socio-educational support service for adolescents and young people at social risk.
- It offers individual and group care, integration into community resources and coordination with social services to improve the quality of life of vulnerable children.

Through these actions, the PortAventura Foundation has brought together more than 1,600 people in inclusive sports events, raising a total of €31,400 for various associations and charity projects. These initiatives have made it possible not only to promote the integration



of people with disabilities, but also to provide support to local entities that work with groups at risk of exclusion. They have also created accessible leisure spaces for the community to enjoy, while promoting values such as solidarity, inclusion and cooperation.



EVENTS WITH PEDIATRIC HOSPITALS

Sant Joan de Déu Hospital

PEDIATRIC ICU

In 2015, the PortAventura Foundation and the Sant Joan de Déu Hospital signed an agreement whereby the foundation committed to donate three million euros over a period of ten years (until 2024) to fund the construction of a new pediatric ICU.

With the last contribution of €202,500 in 2024, the financing agreement came to an end, marking the end of a decade of commitment to children's health.

The new Pediatric Intensive Care Unit has an area four times larger than the previous one and was designed with three objectives:

- Improve the stay of hospitalized children and their families.
- Equip the unit with the most advanced technology.
- Optimize the workspace for healthcare personnel.

Major improvements and innovations include:

Infrastructure and distribution

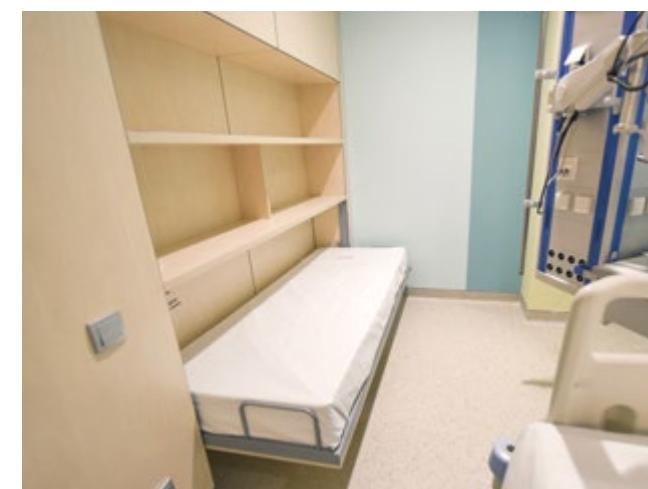
- The ICU is divided into two areas: one with 14 beds (expandable to 18) and another with 10 beds, in addition to support spaces such as nursing stations, storage areas and preparation zones.
- Each of the 24 boxes is closed to ensure privacy and comfort, has a bed for a companion and allows the presence of family members 24 hours a day.
- A common rest area has been set up for companions.

Technological and functional advances

- Each room has two technical columns (wet and dry) to connect medical equipment, eliminating cables and optimizing mobility.
- A remote monitoring system has been implemented, with alarms and MYCO terminals for healthcare personnel, reducing the need for direct access to the rooms and minimizing discomfort for patients.
- A "simulation room" with videoconferencing technology has been incorporated, allowing continuous training of staff and consultation with other hospitals in real time.

Humanization of space

- A decor project to create a more welcoming atmosphere was carried out to aid in the recovery of the children. The theme is the marine world, with illustrations of turtles, seahorses and killer whales, as well as an outdoor fish tank.
- The rooms have been strategically oriented to ensure natural light enters, creating a warmer, healthier environment.



COMPLEMENTARY INITIATIVES

In addition to medical infrastructure, the agreement also included initiatives to improve the wellbeing of hospitalized children:

- In 2016, a playground was built at the hospital.
- "Discharge Pack" program: Patients who are discharged from the hospital receive tickets to PortAventura Park, with the aim of associating their departure from the hospital with a moment of joy and celebration. Thanks to this ambitious project, the new pediatric ICU in Sant Joan de Déu Hospital has become a leader in innovation, comfort and humanization of the hospital environment, positively impacting the recovery of thousands of children and their families.



€202,500
Contributed
in 2024

"Thank you for helping to humanize the hospital stay and for reminding us of the transformative power of generosity and social commitment."

ESTHER VIDE GAIN BEA

Manager of the Maternal and Child Subprocess
of the Hospital Sant Joan de Reus



Sant Joan de Reus and Joan XXIII Hospital in Tarragona

CHRISTMAS WITH HOPE

Like every Christmas, the beloved characters of PortAventura Park's *Sesame Street* visited the maternity and paediatric wards of Tarragona's Sant Joan de Reus and Joan XIII hospitals. During their visit, they brought enthusiasm, smiles and gifts to the hospitalized children and young people, who received their favorite characters with excitement and surprise. Thanks to this initiative, the children and their families were able to enjoy a special moment, in which, in addition to joy, they received a Woody plush toy and best wishes for recovery. This solidarity event was made possible by a group of PortAventura volunteers, who temporarily left their usual activities to join the cause, as well as several suppliers who wanted to collaborate on the project.

In addition, on December 12 we participated in the traditional Encesa de Llums (Switching on the Lights) at Sant Joan de Déu Hospital, facilitating the transfer of a team of volunteers to the event. During this day of celebration, PortAventura offered its "It's Christmas" show at Sésamo Aventura, providing a magical moment for visitors, families and staff at this prestigious pediatric hospital in Barcelona.

Thanks to these initiatives, hundreds of children and families experienced moments of joy and disconnection at an especially sensitive time. The combination of entertainment, solidarity and commitment allowed the magic of Christmas to reach those who need it most.

ACCESS TO LEISURE

In 2024, the PortAventura Foundation brought leisure time to 13,514 children and young people in vulnerable situations with the delivery of free or very low-cost tickets to PortAventura Park.

This action is aimed at local centers that dedicate their efforts to improving the quality of life of children, especially those who support people with serious illnesses or at risk of social exclusion. The foundation has worked with various organizations to ensure that these children enjoy unforgettable leisure experiences, including Fundación Xana, Sonrisas Sor Lucía Caram and DANA Valencia with the support of the Transvía Group.

With these initiatives, the PortAventura Foundation reaffirms its commitment to inclusion, solidarity and improving the quality of life of thousands of children and families in vulnerable situations.




13,514
Boys, girls and teenagers in PortAventura Park




"FENT AMICS" DOWN CATALUNYA

Once again, the 10 organizations that make up Down Catalunya and the PortAventura Foundation held the "Fent Amics" (Making Friends) solidarity event, which brought together almost 4,000 people in a playful and family atmosphere. This was the 15th year of the event and it was also the 20th anniversary of Down Catalunya. The day began with various performances in the park's Chinese Theater, followed by families enjoying a festive day.



10
Organizations



4,000
Attendees



"For families, volunteers and young people, it *was* a day filled with joy and togetherness that *we will* remember fondly."

FAMILIAAMIC
Participants of the "Fent Amics" solidarity event



THE SOLIDARITY DINNER

The PortAventura Foundation raised €125,931 at the XIII Solidarity Dinner to promote three projects focused on the inclusion of children and young people in vulnerable situations. At the 2024 event, the beneficiaries were the Fundació Casa Sant Josep de la Xarxa Santa Tecla and the Centre de Formació Permanent of the Fundació Universitat Rovira i Virgili (URV), two local organizations that carry out exceptional work with children and young people at risk. The third award went to Dreams Village, from the PortAventura Foundation itself.

Under the slogan "Let's dream for a better future", more than 1,200 diners, including individuals, companies, public bodies and charities, gathered at the Convention Center to enjoy an evening of solidarity with shows and surprises. Commitment to children and youth at risk does not take vacations. The 13th Solidarity Dinner once again brought together the leading figures of the Costa Daurada in an event that combined music, spectacle and an exquisite culinary selection.

During the event, Ramon Marsal delivered the funds raised to the three beneficiary projects and highlighted the importance of the event as an opportunity to reflect on the positive impact that can be achieved in the community. Despite their unique characteristics, these three projects share a common goal: to improve the quality of life for children and adolescents in vulnerable situations and to create a positive impact on society.

Over its thirteen-year history, the PortAventura Foundation's Charity Dinner has become a significant social event, successfully raising over one million euros for projects that promote inclusion and well-being, thanks to the commitment of businesses, organizations, and individuals.

- | | | |
|---------------------------------|------------------------|----------------------------------|
| ▶ Anex | ▶ Europastry | ▶ Grupo Opentours |
| ▶ Artyplan | ▶ Fundació «la Caixa» | ▶ Plana |
| ▶ Atlantic Forwarding Spain | ▶ Fantasía Animación | ▶ Port Tarragona |
| ▶ Atrápalo | ▶ FCC Medio Ambiente | ▶ PortAventura Business & Events |
| ▶ BASF | ▶ Feeling Comunicació | ▶ Raventós Codorniu |
| ▶ BBLTranslation | ▶ Fermator Group | ▶ Repsol |
| ▶ Mas La Boella | ▶ Forno d'Asolo | ▶ Café Saula |
| ▶ Booster Audiovisual Solutions | ▶ Fundació Barça | ▶ Sabico Seguridad |
| ▶ Bou | ▶ Fundación LaLiga | ▶ Solanes |
| ▶ Busco un chollo | ▶ Gicsa | ▶ Tick'nBox |
| ▶ Campofrío | ▶ Gold Events & Sports | ▶ Tixalia |
| ▶ Cide | ▶ Green & Human | ▶ Familia Torres |
| ▶ Coca-Cola | ▶ Infinitum Golf | ▶ Transgourmet |
| ▶ Claramunt Food Service | ▶ ISS | ▶ Grupo TSC |
| ▶ Grupo Cobra | ▶ I4C | ▶ Grupo TGT |
| ▶ Damm | ▶ Jean Leon | ▶ Vallribera |
| ▶ Dow | ▶ Grupo Julià | ▶ Hospital Viamed Monegal |
| ▶ Elecnor Infraestructuras | ▶ Servicios Kenko | ▶ Viajes El Corte Inglés |
| ▶ English Summer | ▶ LaLiga | ▶ Viajes Olympia |
| ▶ Euroports | ▶ Odeon Tours | ▶ Villa Engracia |
| ▶ Europlayas | ▶ BMW Oliva Motor | ▶ World 2 Meet |


+ 1,200
Attendees


€125,931
Raised



Collaborations thanks to the Solidarity Dinner

CENTRE DE FORMACIÓ PERMANENT URV

The Centre de Formació Permanent in Universitat Rovira i Virgili promotes two programs aimed at groups in vulnerable situations, with the aim of reducing inequalities and promoting educational and labor inclusion.

INSERLAB is designed for youth with intellectual disabilities, developmental disorders, or autism spectrum disorders who face increased barriers to employment. Through an approach based on the universal design of learning, the program adapts training activities to their needs, fostering independence, self-esteem and the development of technical and social skills.

AMB-ÈXIT-ED addresses the problem of academic dropout among young people who have aged out of the care system. Through academic support, resources, and guidance, the program provides them with tools to complete university studies and access better job opportunities. Their aim is to reduce educational inequality and promote a more inclusive society.



FFUNDACIÓ CASA SANT JOSEP (XARXA SANTA TECLA)

With more than a century of history, la Fundació Casa Sant Josep has worked to protect children and adolescents at risk. Currently, under the management of la Xarxa Santa Tecla, it remains committed to child welfare through innovative projects.

Its current initiative consists of the creation of a welcoming environment within the CRAE Sant Josep, which simulates a home and facilitates the family reunification of children who have been separated from their parents. This space will allow the technical teams to evaluate each case and work with the families in the development of parental competencies, providing them with tools to address the difficulties that led to the separation.

In Catalonia, more than 17,900 children and adolescents receive care from Social Services and the DGAIA, and more than 6,500 live in residential centers or foster families.

This initiative seeks to reduce these figures, providing children with the opportunity to regain a safe and stable family environment.

DREAMS VILLAGE

PortAventura Dreams Village is a project of the PortAventura Foundation that offers free stays of six days to children between 4 and 17 years old with serious illnesses, together with their families.

Every year more than 300 families enjoy this unique experience, which combines access to the parks of PortAventura with recreational and therapeutic activities. The goal is to create a positive impact on recovery from a psychological perspective, while strengthening family bonds and creating unforgettable memories.



WE DREAM AS A TEAM

CORPORATE SOCIAL ACTION

TEAMING

In 2008, PortAventura World launched the Teaming solidarity project, based on the premise that a big impact can be achieved with a small gesture. This system of team micro-donations allows people who are part of a company or institution to voluntarily donate 1 euro per month of their payroll to support one or more charitable causes, chosen by vote from among those participating in the project.

Since our creation in 2011, at the PortAventura Foundation we have integrated the PortAventura World Teaming into our annual action plan. In addition to managing the program, we also contribute financially, tripling each euro contributed by employees with an additional donation of €2 from the Foundation.


€18,188
Raised



Collaborations thanks to Teaming

In 2024, over 500 participants selected, via an online vote, the two projects to benefit from the Teaming initiative:



PROYECTO IVET FUNDACIÓN ALADINA

The donations of PortAventura employees, together with the contribution of our Foundation, raised €18,188 through the Teaming initiative in 2024. We allocated the entire amount to the two selected organizations, which received it at an event held at the Grand Imperial Theater of PortAventura World.



WOODY 'S JOURNEY

This initiative was created to mark the 5th anniversary of Dreams Village and to connect the PAW team with the Foundation's mission. This initiative aims to remind the company's teams about the mission and activities of the PortAventura Foundation. To do this, six plush Woody dolls, each wearing Dreams T-shirts, toured the various departments and areas of PortAventura World week by week.



PLASTIC CAP COLLECTION

We are collaborating once again with the Seur Foundation's solidarity project "Caps for a new life". To achieve this, we placed a large heart-shaped trash bin in the PortAventura World facilities where all visitors and park employees could deposit their plastic caps. Thanks to the proceeds obtained from recycling the plastic caps collected through this initiative, we can finance treatments and orthopedic materials not covered by Social Security.

CORPORATE VOLUNTEERING

Highlighted figures



85

Volunteers



765

Hours spent



219

Activities

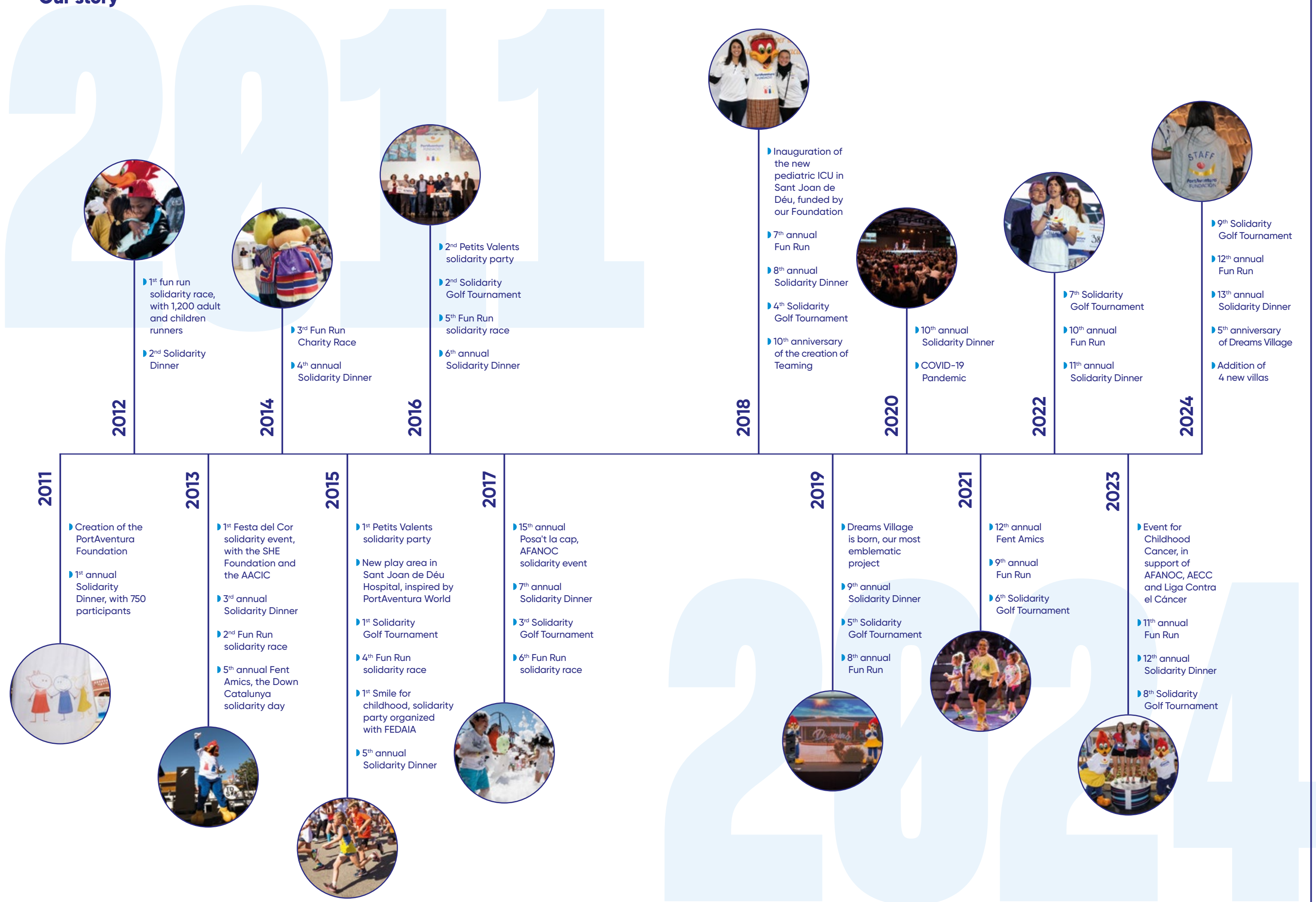
Volunteers 2024

Jorcelina Batista Oliveira
Ndeye Ndella Diouf Diop
Isabel Domingo Moyano
Karina del Valle García Luna
Cristina Gómez Herrera
Mari Luz Guillamón Vilches
Anna Hurtado Pujals
Silvia Llamas Mondéjar
Ana Megía Flores
María José Peco Benito
Roberto Ramos Antúnez
Juana Robles Mora
Aurelio Romera Santaengracia
Samanta Rubio Martínez
Ivette Salusi Cavanna
Laura Tribó Paul
Astal Vilaró López
Esther Orobón Rodríguez
Diego Hernández Díaz
Maria Mercè Salvadó Viñas
Carlos Remón
Eric Rodríguez López
Miryam Pueyo Osinaga
Inmaculada Afan Ruiz
Yocarís Gizvel Monegro Mejía
Marc Vendrell Barrero
Anna Shilova
Laura Gil Orellana
Isabel Pablo Vinaixa
Laia Canela Ardèvol
Aicha Moun
Juan Manuel Fernández Vallés
Esperanza Mercedes Chávez Falcón
Silvia Escoda Ferré
Esther Rodríguez Martín
Maite Elisa Marino

Sandra Bernal Gómez
Viviane Pinheiro da Cunha
Mónica Milá Embid
Anuar Sbai Belhay
Sheila Tarifa Cano
Paula Navarro Duran
Gisela Borràs Martínez
Marcello Bregolato Requena
Leyre Santiago Aldomar
Tanya Ilieva Ilieva
Laura Vallhonrat Blanco
Lucía Andrés Santos
Rosana Pérez Amo
Noémie Serrano Heid
Albert Mercadé Lara
Jordi López Cantillo
Verónica Larraburu Reyes
Ana Maria Vladu
Vanessa Rodríguez Roberto
Judith Lleixà Buch
Luisa Velásquez Muñoz
Gema Nevot Ibáñez
Maria Moya Arévalo
Mónica Conesa Vilanova
Choni Fernández Veciana
María Elena Güemes Santos
Cristina Gavalda Sánchez
Jésica Ángel Díaz
Sandra Rojano González
Marc Donadiós Garriga
Javier Arias-Petit
Victòria Basora Salanova
Angélica Marina Matesanz
Núria Ruiz Queralt
Salvador Marsal Vendrell
Raul Alamillo

Aroa Cuenca Lucas
Elena Spoiala
Jessica Redondo Alonso
Iryna Bunko Zozulya
Thiago Molina Expósito
Julia Gracia Santos
Carles Pelejà Guardia
Angelina Ruiz Jiménez
Shirley Triana Bautista
Carolina Camacho Blázquez
María Jesús Fasciani Planillas
Fernando Ríos Torres (Jaume)
Montserrat Guinovart Rodríguez
Lucía Tabuenca Abreu
Mayda Rea López

Our story



THANK YOU

The image features a solid dark blue background. A large, smooth, curved shape in a lighter blue color starts from the bottom left and sweeps upwards and to the right, filling the right half of the frame. The text 'THANK YOU' is positioned in the top left corner, rendered in a bold, white, sans-serif typeface.

JOY

«Hard times can be overcome. Joy returns with the help of family and friends.»

FAMILY

«I really enjoyed connecting with the other families and seeing my parents unwind—especially my mother.»

GAMES

«Thank you so much for this dream-like week. Thank you from the heart for your kindness, care, facilities, support, rest, and fun.»

FRIENDS

«Thank you so much for these incredible days, everything has been perfect. You're all so kind, you take such good care of us, everything is so beautiful. We'll always be grateful. It's an unforgettable experience. A heartfelt thank you.»

PEACE

«Dreams Village has meant, among so many amazing things, a break from the daily routine that can really wear you down. This opportunity allows you to mentally rest from all that stress.»

DREAMS

«This week can truly be described as a dream—the way you treated us, the ease of escaping from the monotony of daily life... truly, 'dreams'.»



PortAventura[®]
FUNDACIÓN

fundacionportaventura.org

